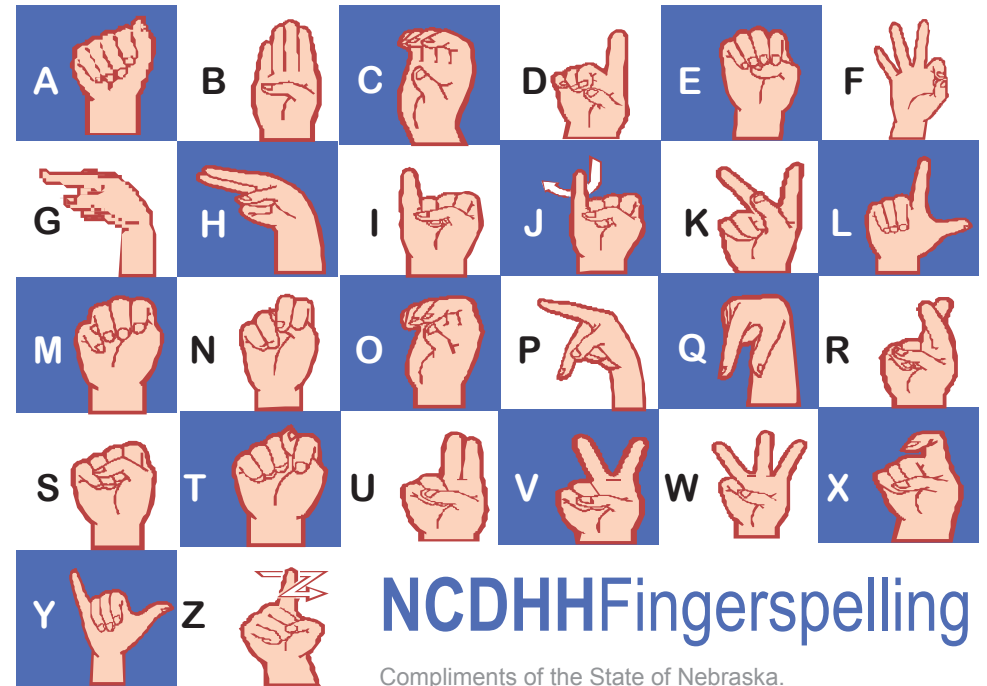


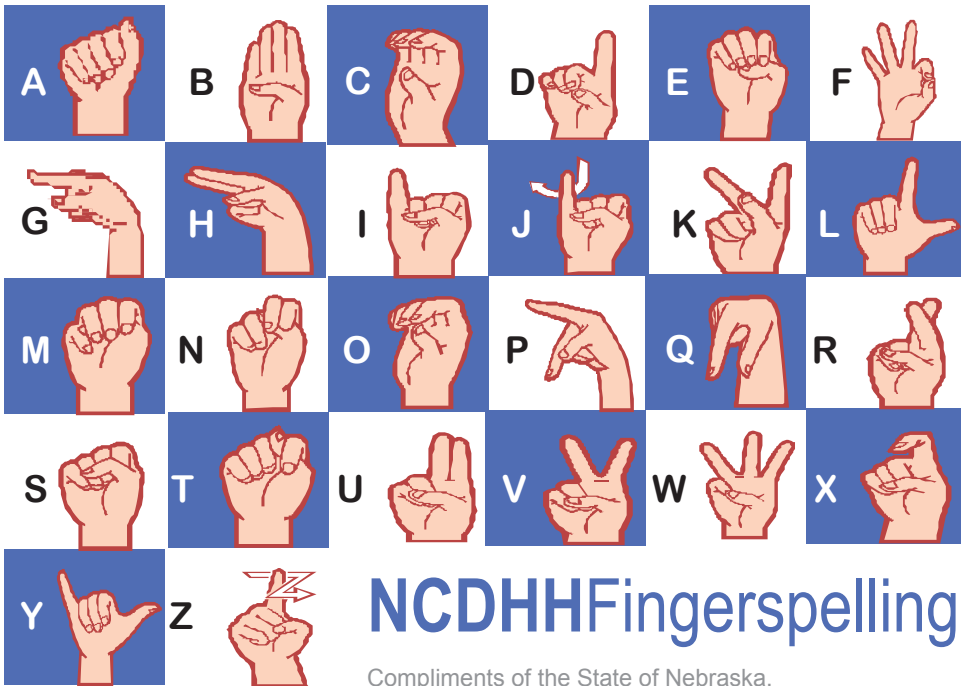
NCDHH Fingerspelling

Compliments of the State of Nebraska.
CARDS NOT FOR INDIVIDUAL RESALE!



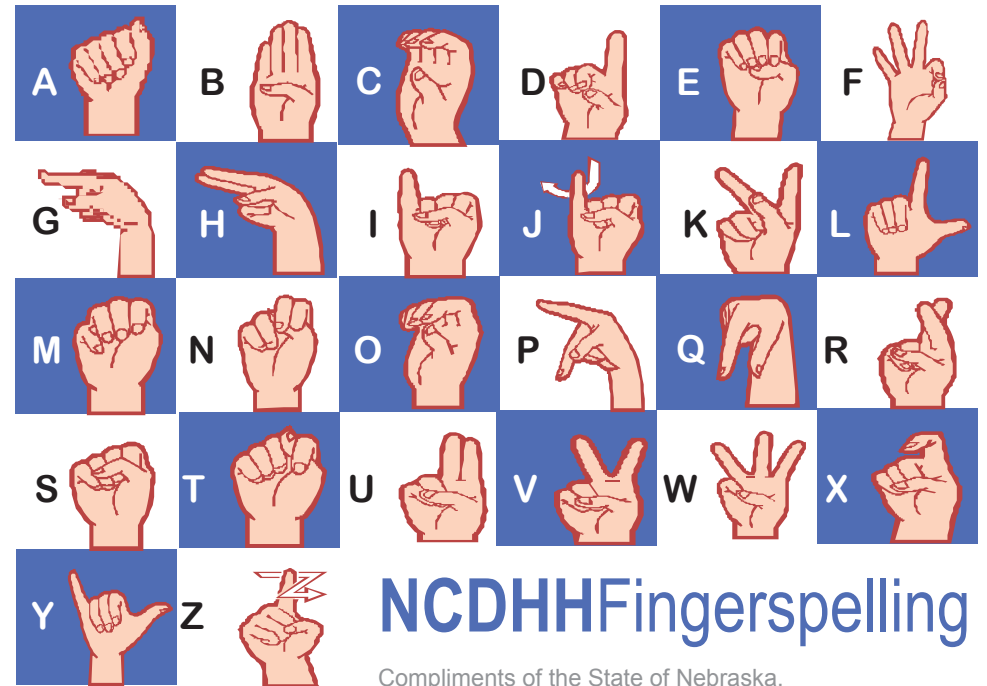
NCDHH Fingerspelling

Compliments of the State of Nebraska.
CARDS NOT FOR INDIVIDUAL RESALE!



NCDHH Fingerspelling

Compliments of the State of Nebraska.
CARDS NOT FOR INDIVIDUAL RESALE!



NCDHH Fingerspelling

Compliments of the State of Nebraska.
CARDS NOT FOR INDIVIDUAL RESALE!

SignLanguage

Quick Communication

Fingerspelling is one facet of ASL, the American Sign Language system.

ASL also incorporates signs, gestures and facial expressions. It is adaptable to sign languages around the globe.

Once a person learns the manual alphabet shown on the reverse side of this card, you can communicate by fingerspelling a word or complete sentences.

Learn more about sign language, including career opportunities, by contacting NCDHH today!

SIGNLanguage



Nebraska Commission
for the Deaf
and Hard of Hearing

Lincoln
4600 Valley Road, Ste 420

Omaha
1313 Farnam On The Mall

North Platte
200 South Silber, Rm 207

402.471.3593 V/TTY
800.545.6244 V/TTY
402.261.2670 VP

www.ncdhh.gov

SignLanguage

Quick Communication

Fingerspelling is one facet of ASL, the American Sign Language system.

ASL also incorporates signs, gestures and facial expressions. It is adaptable to sign languages around the globe.

Once a person learns the manual alphabet shown on the reverse side of this card, you can communicate by fingerspelling a word or complete sentences.

Learn more about sign language, including career opportunities, by contacting NCDHH today!

SIGNLanguage



Nebraska Commission
for the Deaf
and Hard of Hearing

Lincoln
4600 Valley Road, Ste 420

Omaha
1313 Farnam On The Mall

North Platte
200 South Silber, Rm 207

402.471.3593 V/TTY
800.545.6244 V/TTY
402.261.2670 VP

www.ncdhh.gov

SignLanguage

Quick Communication

Fingerspelling is one facet of ASL, the American Sign Language system.

ASL also incorporates signs, gestures and facial expressions. It is adaptable to sign languages around the globe.

Once a person learns the manual alphabet shown on the reverse side of this card, you can communicate by fingerspelling a word or complete sentences.

Learn more about sign language, including career opportunities, by contacting NCDHH today!

SIGNLanguage



Nebraska Commission
for the Deaf
and Hard of Hearing

Lincoln
4600 Valley Road, Ste 420

Omaha
1313 Farnam On The Mall

North Platte
200 South Silber, Rm 207

402.471.3593 V/TTY
800.545.6244 V/TTY
402.261.2670 VP

www.ncdhh.gov

SignLanguage

Quick Communication

Fingerspelling is one facet of ASL, the American Sign Language system.

ASL also incorporates signs, gestures and facial expressions. It is adaptable to sign languages around the globe.

Once a person learns the manual alphabet shown on the reverse side of this card, you can communicate by fingerspelling a word or complete sentences.

Learn more about sign language, including career opportunities, by contacting NCDHH today!

SIGNLanguage



Nebraska Commission
for the Deaf
and Hard of Hearing

Lincoln
4600 Valley Road, Ste 420

Omaha
1313 Farnam On The Mall

North Platte
200 South Silber, Rm 207

402.471.3593 V/TTY
800.545.6244 V/TTY
402.261.2670 VP

www.ncdhh.gov